

## Visual Mind Server Installation Guide

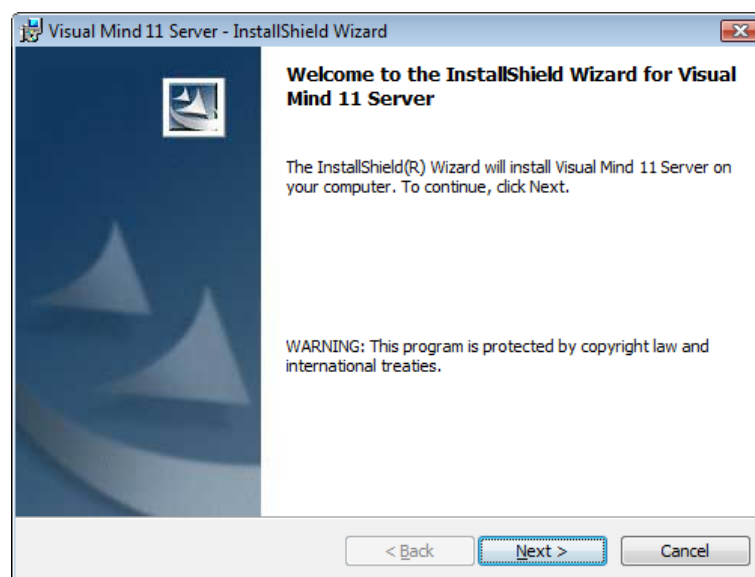
This installation guide will quickly lead you through the process of installing the Visual Mind Server.

### 1. Deciding which computer to use

The first step of the process is to decide which computer to install the Visual Mind server to. The Visual Mind Server can run on virtually any computer that runs Windows 2000, XP or Vista. If you are evaluating the Visual Mind Server, you can perfectly well run the server on the same PC as you have installed your Visual Mind client. If high server load is expected, however, we advise a separate computer.

### 2. Installing the server

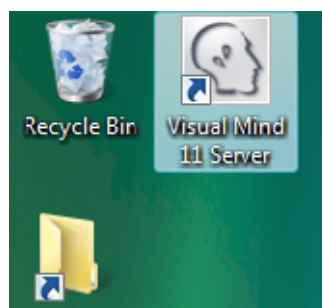
To install the Visual Mind Server, simply run the Visual Mind Server installation program. The installation program will guide you through the process.



The welcome message that appears after you start the Visual Mind Server install program.

### 3. Starting the server

Now, it is time to start the server. You can start the server from the Windows Start menu, or from the shortcut located on the Windows Desktop.



Click the Visual Mind Server shortcut on the desktop to start the Visual Mind Server.

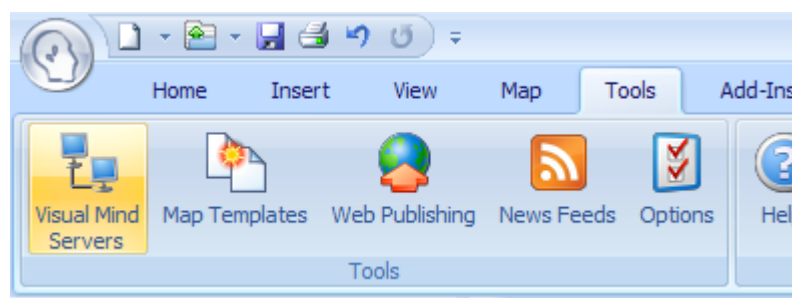
#### 4. Configuring the server

When the Visual Mind Server is installed, it is set up with a default configuration. This means that the server is immediately ready-to-use without any further configuration. This document assumes that you use the standard configuration, and does not focus on configuring the server. If you would like to read about configuring the server, please open the Visual Mind Server Help documentation (available by clicking on the "Help" button in the main server window).

#### 5. Start using the server

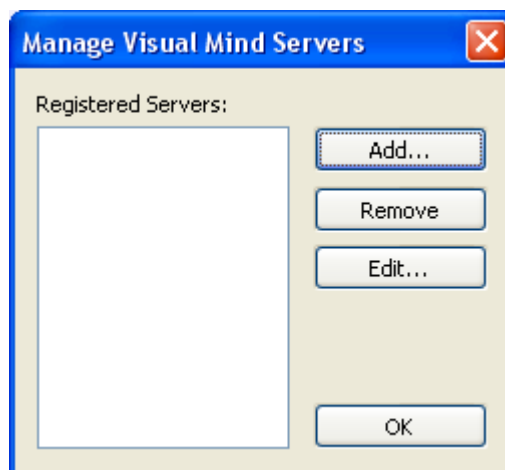
When a Visual Mind server is installed and running, users can start using the server for sharing Visual Mind maps. However, before a user can connect to the server, the server details must be registered in the Visual Mind clients. To register a server in a Visual Mind client, do the following:

1. From the "Tools" tab in the Visual Mind ribbon bar, select "Visual Mind Servers...". This will open the "Manage Visual Mind Servers" dialog box.



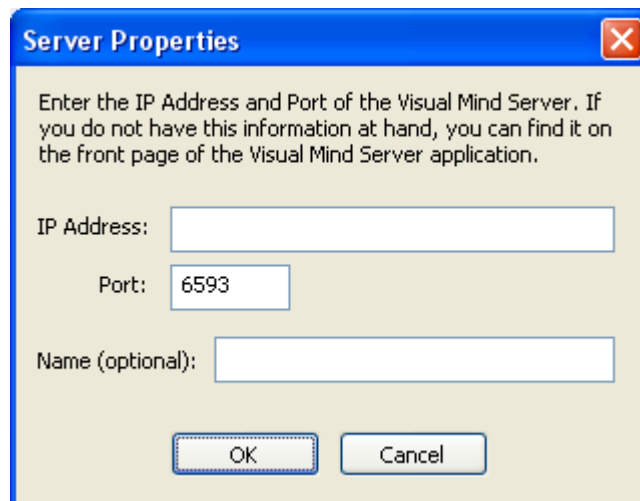
Click the Visual Mind Servers button to open the "Manage Visual Mind Servers" dialog box.

2. Click the "Add..." button. This will open the "Server Properties" dialog box for a new server to be registered.



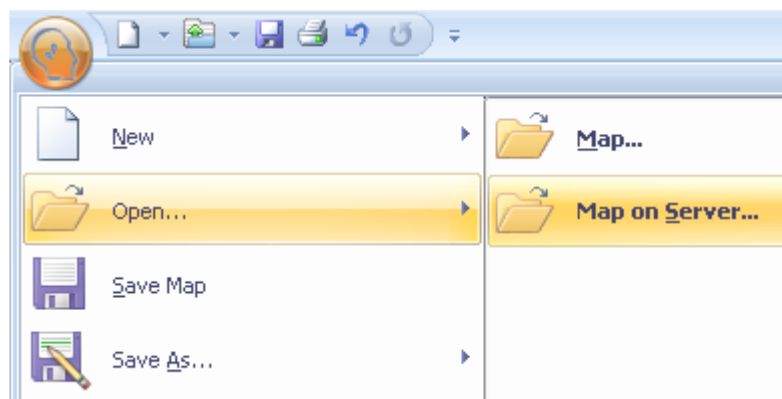
Click the "Add..." button to register a new server.

3. In the "IP Address" field, enter the IP address of the computer where the Visual Mind server is running. You can find the server IP address on the front page of the Visual Mind Server application.
4. In the "Port" field, enter the port number of the Visual Mind server. If the server uses the default configuration, the port number is 6593.
5. In the "Name (optional)", you may enter a name of the server. The name will appear in messages related to this server. If no name is entered, the name is set to the IP address of the server.



The "Server Properties" dialog box.

When a Visual Mind Server is registered in the Visual Mind client, the user can use the functions for creating, opening and saving maps to the server, which all are available from the "File" menu of the Visual Mind client.



The functions for creating, opening and saving a server map are available from the File menu.